

中国农业科学院（深圳）农业基因组研究所

导师招生





AGIS



" 973"

Cell

SCI

100

Cell

Nature

Science

Nature

Genetics

"

"

"

"

huangsanwen@caas.cn



Plant	Plant Cell	Plant Physiology	Nature Plant	Molecular
25	SCI	800	150	SCI

"

"

jianni@caas.cn



“ ”

zhangchunzhi 01@caas. cn



8 SCI

Genome Biology, Molecular Biology, Evolution, New
Phytologist

wangli03@caas.cn



Science

Molecular Plant Nucleic Acids Research

“

”

zhangxi nyan@caas. cn



Plant Cell Plant Physiology, New Phytologist,
Molecular Plant 10

liwei11@caas.cn



Nature, Molecular
Plant, PLoS Biology, Plant Physiology Plant Journal SCI

10

lisuhua01@caas.cn



/

SCI 10

1

4

"

"

1

1

Hel i yon Appl i ed Bi osci ences

4 SCI

/

l i chongl x@caas. cn



2018

RNA

SCI

14

zhangyu07@caas.cn



2020

"

"

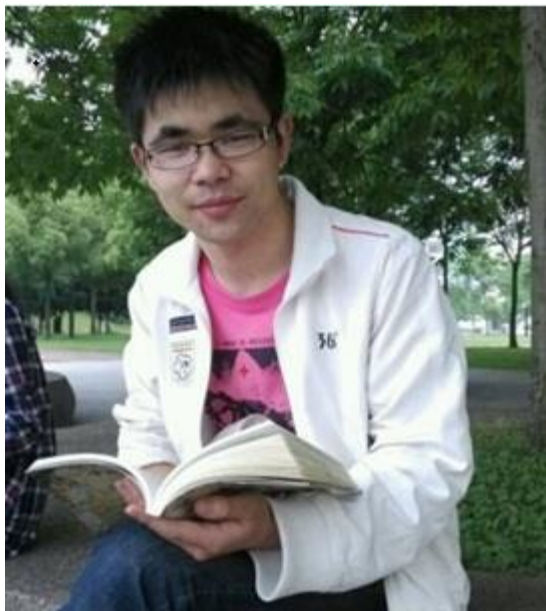
7

SCI

3

2

lvyaqing@caas.cn



2020

SCI 7

/

zhouyao@caas.cn



Strigolactones

Karrikin

The Plant Cell BMC Biology

zhengj s4142@126.com



Pre-PI

Physiology, Plant Journal

Plant Cell, Plant
Journal of Experimental Botany

wuqian01@caas.cn



A G I S

AGIS
中國農工大學
農工學院
作物基因組研究所



2017

(ISSCR

" merit

"

" 2019

"

zuowei@caas.cn



RNA

973

863

20

SCI

70

Genome Biology Nucleic Acid Research

SCI

38

7

1

17

23

1



BMC

Open Data

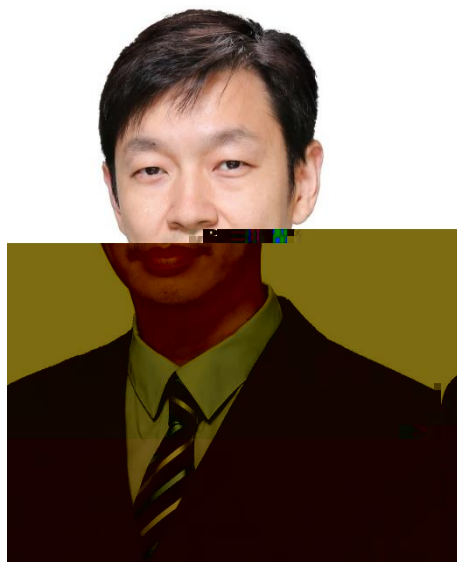
Genome Biology Cell Research

30

"

"

gaofei01@caas.cn



Nature Nature Genetics PNAS NAR

Nature Science Cell SCI

1100

130

zhangyubo@caas.cn



5 (IF 61)

11 SCI (IF 125) Google Scholar 900

SCI 300 286

"

"

liuyuwen@caas.cn



"

"

SCI 30 600 h-index 15

Cell Reports, Blood Cancer Journal,

Epi genetics & Chromatin BMC Genomics 8

1

1

1

BMC Genomics

yi guoqi ang@caas. cn



20

SCI 6

/

4

16

4

3

1

bailijing@caas.cn



1 ()

Nucleic Acids Research, Journal of Pineal Research, DNA
 Research SCI 17

yangyan@caas.cn



CRI SPR/Cas

CRI SPR/Cas

1

1

3

SCI

9



“ ”

() Nucl eic Aci ds Research Cell I
 Bi ol ogy and Toxi col ogy 7 IF 27.7(
 11.5) 4

Pre-PI

kongsiyuan@caas.cn



AGIS
中國
國際
農業科學院
作物基因組研究所

A G I S



90

1

IRRI

yeguoyou@caas.cn



Nature Science

"

"

Cell Microbiome

3700



700

SCI

25

Nature Communications Plant Cell

"

"

cui peng@caas. cn



NGS

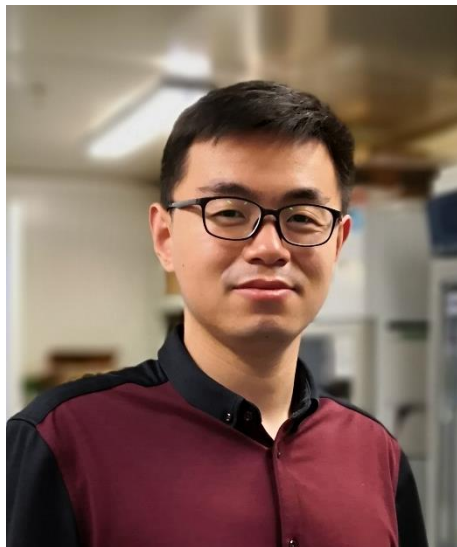
AI0-seq FBI-seq

Nature

Communications, Plant Methods

"

"



ssDRIP-seq

R-loop

R-loop

Nature Plants Cell Research Plant Cell Science

Advances

xuwei01@caas.cn



ALLHi C

Cell

"

"

Nature Nature Genetics Nature Plants

zhangxi ngtan@caas. cn



ISMB

RECOMB

Bioinformatics Journal of Computational

Biology

panweihua@caas.cn



DNA

npl nv SOAP-popl ndel

3

shaohaojing@caas.cn



Nature Communications GPB SCI

linqiang@caas.cn

QC ' (u0 .B w rW C Ě! x < Æ x[•Žc ôÒ>-# ÍS^`T ¿" O 2‡S



A G I S

AGIS
中國農工大學
農工學院
作物基因組研究所



PNAS Current Biology Biological Reviews

100

/

wanggui.rong@caas.cn

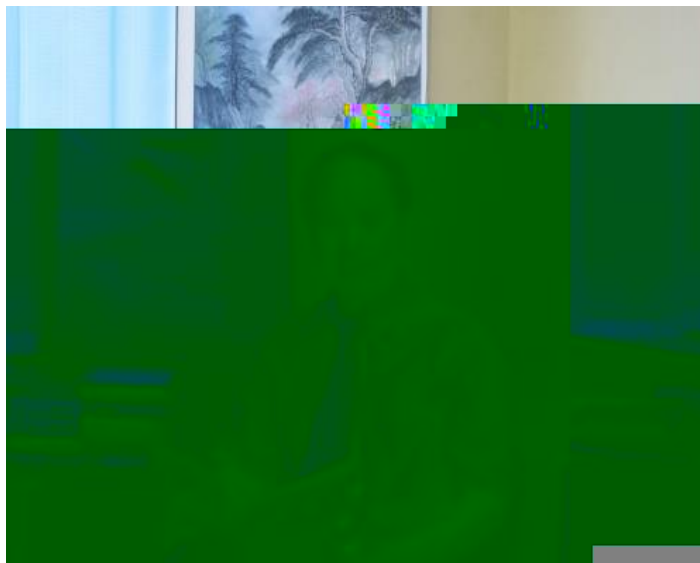


Bt

SCI 30

5

xi aoyutao@caas. cn



	20		20
Nature Communications	SCI	180	20
	20		

wanfanghao@caas.cn



/

Biotechnology Advances Journal of Medicinal
Chemistry Journal of Biological Chemistry

qiangyang@dlut.edu.cn



SCI 30

10

Nature Communications

20

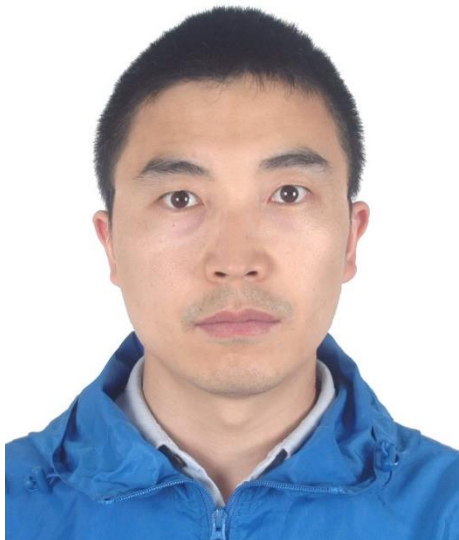
qi anwanqi ang@caas. cn



, *Plant Cell*

5

zhoushaoqun@caas.cn



Nature Communication

Cell, Molecular Plant, Plant Cell,

suntongjun@caas.cn



Nature Communications

New Phytologist

Molecular

Ecology Resources

SCI

10

liubo03@caas.cn





AGIS

" - "

40 Science 2 CELL Nature Biotechnology Plant Cell
F1000 1
)



()

The Plant Cell

Plant Physiology

"

"



RNA N⁶-methyl adenosine
 (m⁶A) 2'-O-methylation (Nm) RNA

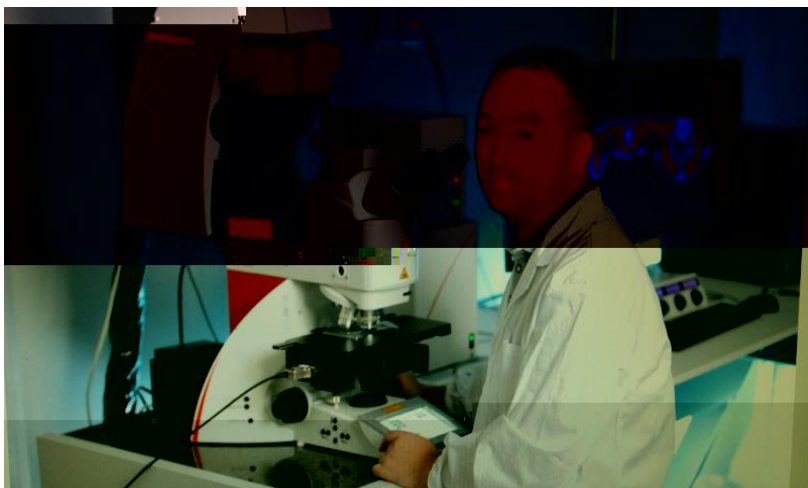
PLoS Biology, PNAS, Plant Cell Plant

Journal

"

"

/



Plant Cell New Phytologist Plant

Journal

"

"

wangquan03@caas.cn



DNA

H3K9

Nature Communications The EMBO Journal J Integr

"

"

Plant Biol

SCI 10

zhangcuijun@caas.cn



"

"

60

SCI 30

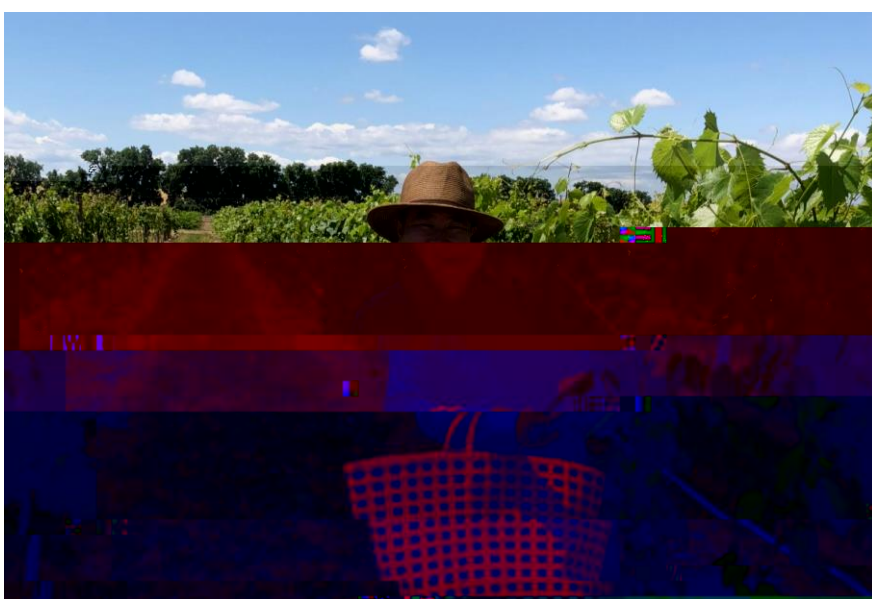
PNAS 2

20

MBE MPE

/

/



"

"

Nature Plants 3 PNAS Molecular Biology and
 Evolution SCI 12 SCI Horticulture
 Research Horticulturae



20

Nature Communications New

Phytologists Genetics Genome Biology and Evolution

Briefings in Bioinformatics

5

huguanjing@caas.cn





New Phytologist SCI

22

Molecular Plant

shanglianguang@163.com



RNA

RNA

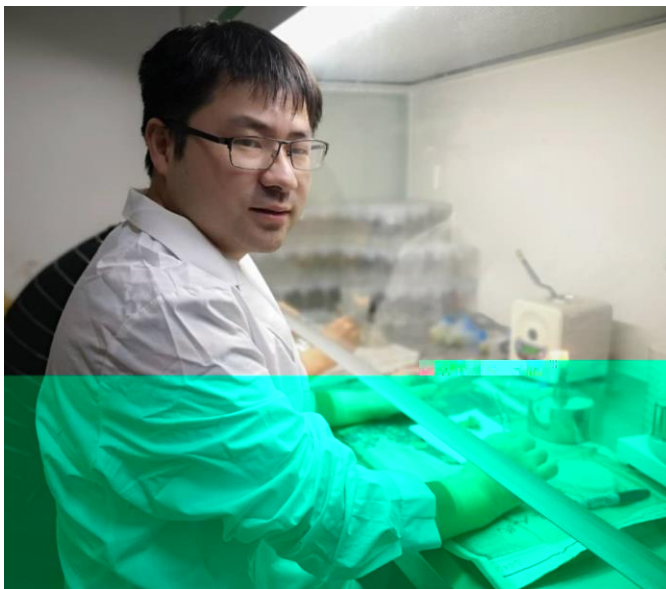
Nat Commun, Plant

Cell, New Phytol, Plant J

SCI 17

8

wangsui kang@caas.cn



20

3

songbo01@caas.cn